


- SK1700 – 1.70x1.70 m
 - SN2050 – 2.05x2.05 m
 -
- H=Altezza sotto gancio
H=Height under hook
H=Hauteur sous crochet





Torre/Reazioni | Masts/Reactions | Mat/Réactions | Maste/Eckdrücke | Mástil/Reacciones | Tramo/Reacções

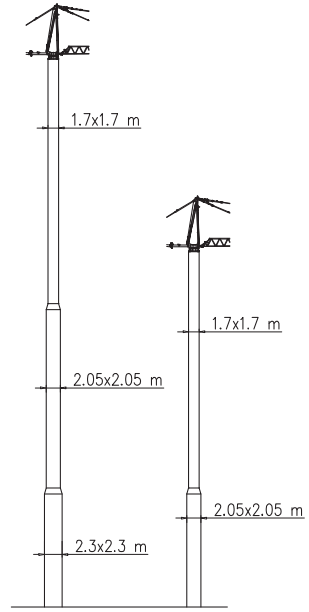
SK1700

 33 m → 58 m

		Torre/Masts/Mat/Maste/Mástil/Tramo														
TRO		H[m]	4f/4f BF117	4f/4f BF052	4f/4f BF039	4f/2f SB117	4f/2f SB052	4f/2f SB039	2f/2f ST117	2f/2f ST052	2f/2f ST039	2f/2f STB117	2f/2f STB039	2f/2f RAO39	4f/2f SBB039	4f/2f SBB117
	M	52	1	1	1				2							
		55.9	2		1				1	1	1					
		46.8	1		1				2							
		35.1							3							
		55.9	2		1				1	1	1					
	R3	59.9		4									7	1	1	
	M	50.7											6	1	1	

		Torre/Masts/Mat/Maste/Mástil/Tramo														
CAF		H[m]	4f/4f BF117	4f/4f BF052	4f/4f BF039	4f/2f SB117	4f/2f SB052	4f/2f SB039	2f/2f ST117	2f/2f ST052	2f/2f ST039	2f/2f STB117	2f/2f STB039	2f/2f RAO39	4f/2f SBB039	4f/2f SBB117
	R2	55.8	1			1			2		1					
		50.7							4		1					
		59.8	1			1			2		2					
		40.3							3							
		57.2		3		1			6							
		40.3											7	1	1	
		59.8											12	1	1	
		59.8	1										7	1	1	

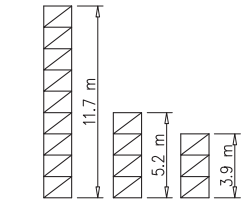
		Torre/Masts/Mat/Maste/Mástil/Tramo														
CATR		H[m]	4f/4f BF117	4f/4f BF052	4f/4f BF039	4f/2f SB117	4f/2f SB052	4f/2f SB039	2f/2f ST117	2f/2f ST052	2f/2f ST039	2f/2f STB117	2f/2f STB039	2f/2f RAO39	4f/2f SBB039	4f/2f SBB117
	R1	52							4							
		52								9						
		40.3							3							
		45.5							3	1						
		33.8	1	1	1											
		52	1										5	1	1	
		52											8	1	1	
		50.7											11	1		



	H=0-45 m	H=46-56 m
R1	89 t	106 t
R2	88 t	106 t
R3	74 t	95 t
M	194 tm	336 tm

Peso zavorra | Ballast weight | Poids du lest | Ballastgewicht | Peso de lastre

H	Tot.
0-35 m	60800 kg
36-45 m	72000 kg
46-60 m	116750 kg



Torre/Reazioni | Masts/Reactions | Mat/Réactions | Maste/Eckdrücke | Mástil/Reacciones | Tramo/Reacções

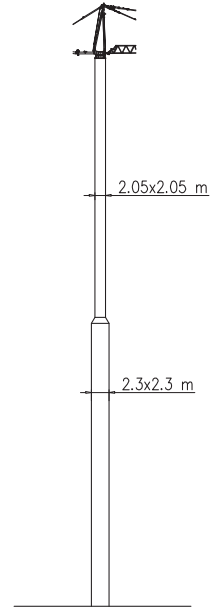
SN2050

33 m → 58 m

		Torre/Masts/Mat/Maste/Mástil/Tramo														
		H[m]	4f/4f BF117	4f/4f BF052	4f/4f BF039	4f/2f SB117	4f/2f SB052	4f/2f SB039	2f/2f ST117	2f/2f ST052	2f/2f ST039	2f/2f STB117	2f/2f STB039	2f/2f RAO39	4f/2f SBB039	4f/2f SBB117
TRO		62.4	2			1			2		1					
		61.1	1	1		1			2	1	1					
TTD		61.1		4			1									
		46.8							4							
		52	1	1		1			2							
		62.4		3									10	1	1	
		62.4	1										9	1		1
		62.4	1									11	1	1		

		Torre/Masts/Mat/Maste/Mástil/Tramo														
		H[m]	4f/4f BF117	4f/4f BF052	4f/4f BF039	4f/2f SB117	4f/2f SB052	4f/2f SB039	2f/2f ST117	2f/2f ST052	2f/2f ST039	2f/2f STB117	2f/2f STB039	2f/2f RAO39	4f/2f SBB039	4f/2f SBB117
CAF		63.7	1			1			3							
		67.6	2						2							
		67.6		4			1			7						
		50.7		1			1		3							
		52				1			3							
		65		3			1						9	1		
		63.7	1										8	1		1
		65.3	1				1						10	1		

		Torre/Masts/Mat/Maste/Mástil/Tramo														
		H[m]	4f/4f BF117	4f/4f BF052	4f/4f BF039	4f/2f SB117	4f/2f SB052	4f/2f SB039	2f/2f ST117	2f/2f ST052	2f/2f ST039	2f/2f STB117	2f/2f STB039	2f/2f RAO39	4f/2f SBB039	4f/2f SBB117
CATR		59.8	1			1			2		2					
		59.8		3			1			5	2					
CATC		45.5					1		3							
		49.4		1				1			9					
		32.5				1			1		1					
		59.8		3								8	1	1		
		59.8	1									9	1	1		
		59.8	1									7	1			1



	H=0-45 m	H=46-68 m
R1	125 t	140 t
R2	130 t	144 t
R3	95 t	103 t
M	486 tm	570 tm

Peso zavorra | Ballast weight | Poids du lest | Ballastgewicht | Peso de lastre

	H	Tot.
	0-55 m	102320 kg
	56-68 m	112460 kg



Curve di carico | Courbes de charges | Load diagrams | LastKurven | Curvas de cargas

P_{max} 3000 kg

	22000 kg	58 m	3.5	29	30	32	34	36	38	40	42	44	46	48	50	52	54	56	58	m
			3000	3000	2940	2820	2640	2470	2320	2190	2070	1960	1860	1770	1680	1600	1530	1460	1400	kg
	22000 kg	55 m	3.5			33	34	36	38	40	42	44	46	48	50	52	54	55	m	
			3000			3000	2870	2780	2620	2470	2340	2210	2100	2000	1910	1820	1740	1700	kg	
	19560 kg	50 m	3.5						39	40	42	44	46	48	50	m				
			3000						3000	2960	2810	2660	2530	2410	2300	kg				
	17115 kg	44 m	3.5						37	38	40	42	44	m						
			3000						3000	2970	2900	2740	2600	kg						
	14670 kg	38 m	3.5				35	36	38	m										
			3000				3000	2980	2900	kg										

P_{max} 6000/3000 kg

	22000 kg	58 m	3.5	18	20	22	24	26	28	30	32	34	36	38	40	42	44	46	48	50	52	54	56	58	m
			6000	6000	4900	4200	3780	3460	3180	2940	2720	2540	2370	2220	2090	1970	1860	1760	1670	1580	1500	1430	1360	1300	kg
	22000 kg	55 m	3.5	19	20	22	24	26	28	30	32	34	36	38	40	42	44	46	48	50	52	54	55	m	
			6000	6000	5400	4680	4250	3890	3580	3310	3080	2870	2680	2520	2370	2240	2110	2000	1900	1810	1720	1640	1600	kg	
	19560 kg	50 m	3.5		22	24	26	28	30	32	34	36	38	40	42	44	46	48	50	m					
			6000		6000	5300	4650	4280	3970	3690	3450	3230	3040	2860	2710	2560	2430	2310	2200	kg					
	17115 kg	44 m	3.5		22	24	26	28	30	32	34	36	38	40	42	44	m								
			6000		6000	5200	4540	4190	3880	3610	3370	3160	2970	2800	2640	2500	kg								
	14670 kg	38 m	3.5		22	24	26	28	30	32	34	36	38	m											
			6000		6000	5100	4400	3960	3670	3410	3180	2980	2800	kg											
	14670 kg	33 m	3.5		23	24	26	28	30	32	33	m													
			5000		5000	4750	4350	3770	3480	3350	3300	kg													

P_{max} 6000 kg

	22000 kg	58 m	3.5	18	20	22	24	26	28	30	32	34	36	38	40	42	44	46	48	50	52	54	56	58	m
			6000	6000	4900	4200	3780	3460	3180	2940	2720	2540	2370	2220	2090	1970	1860	1760	1670	1580	1500	1430	1360	1300	kg
	22000 kg	55 m	3.5	19	20	22	24	26	28	30	32	34	36	38	40	42	44	46	48	50	52	54	55	m	
			6000	6000	5400	4680	4250	3890	3580	3310	3080	2870	2680	2520	2370	2240	2110	2000	1900	1810	1720	1640	1600	kg	
	19560 kg	50 m	3.5		22	24	26	28	30	32	34	36	38	40	42	44	46	48	50	m					
			6000		6000	5300	4650	4280	3970	3690	3450	3230	3040	2860	2710	2560	2430	2310	2200	kg					
	17115 kg	44 m	3.5		22	24	26	28	30	32	34	36	38	40	42	44	m								
			6000		6000	5200	4540	4190	3880	3610	3370	3160	2970	2800	2640	2500	kg								

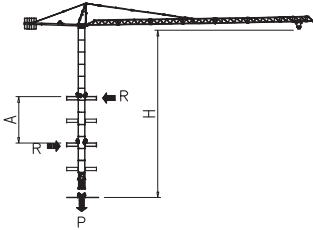
Pesi e ingombri | Packing list | Liste de colisage | Gewicht und abmessungen

Denominazione Description	Disegno Draw	Pezzi Pieces	Dimensioni-Dimensions (mm)			Peso-Weight (kg)		
			L	W	H	Unit	Total	
Elemento di braccio Jib element Elément de èche Elemento de flecha	n°1		1	5750	1400	1490	810	-
	n°2		1	5860	1400	1470	790	-
	n°3		1	5860	1400	1470	835	-
	n°4		1	5860	1400	1470	670	-
	n°5		1	5860	1400	1470	680	-
	n°6		1	5850	1400	1470	750	-
	n°7		1	5820	1400	1470	575	-
	n°8		1	5820	1400	1470	520	-
	n°9		1	5740	1400	1450	415	-
	n°10		1	2940	1400	1450	250	-
	n°11		1	5770	1400	1450	450	-
Tirante completo Complete tie rod Tirant complète Tirante completo		9	6500	200	200	240	2160	
Cuspide Cusp Pointe Cùspide		1	6800	1500	1000	1550	-	
Contorbraccio completo Complete counterjib Contreflèche complète Contraflecha completa		1	8500	1650	600	1350	-	
Gruppo girevole Slewing group Table tournante Grupo giratorio		SK1700	1	5100	1810	1400	4100	-
		SN2050	1	5100	1810	1400	4300	-
Carrello Trolley Chariot Carretilla		1	1900	1620	1000	400	-	
Ballatoio con cabina Access balcony with cabin Porte cabine Balcòn corrido con cabina		1	2500	2150	2450	1000	-	
Blocchi contrappeso Counterweight block Contre-poids Bloques de contrapeso	VX24 	9	1100	280	3400	2445	22000	
Elemento di base Base element Mat de base Elemento de base	BA052 	SK1700	1	5200	2060	2060	3650	-
		SN2050	1	5200	2260	2260	4040	-

Pesi e ingombri | Packing list | Liste de colisage | Gewicht und abmessungen

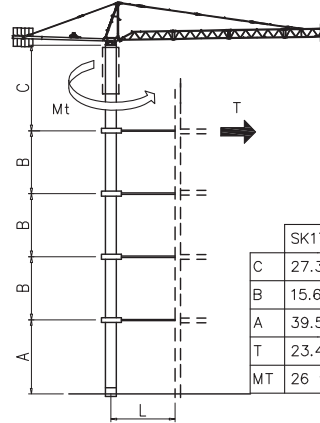
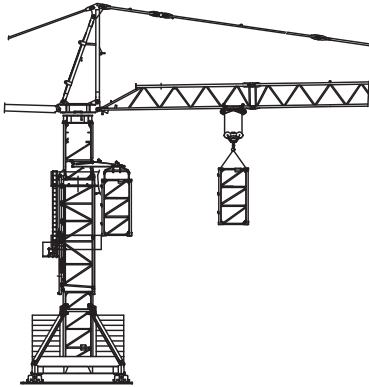
Denominazione Description	Disegno Draw	Pezzi Pieces	Dimensioni-Dimensions (mm)			Peso-Weight (kg)			
			L	W	H	Unit	Total		
Elemento di torre Mast element Elément de mât Elemento de torre	ST039		SK1700	—	3900	1785	1785	1750	—
			SN2050	—	3900	2110	2110	2320	—
	ST052		SK1700	—	5200	1785	1785	2250	—
			SN2050	—	5200	2110	2110	2850	—
	ST117		SK1700	—	11700	1785	1785	4690	—
			SN2050	—	11700	2110	2110	5790	—
	SB039		SK1700	—	3900	1785	1785	2100	—
			SN2050	—	3900	2110	2110	2710	—
	SB052		SK1700	—	5200	1785	1785	2600	—
			SN2050	—	5200	2110	2110	3350	—
	SB117		SK1700	—	11700	1785	1785	4830	—
			SN2050	—	11700	2110	2110	7000	—
BF039		SK1700	—	3900	1785	1785	2450	—	
		SN2050	—	3900	2110	2110	3370	—	
BF052		SK1700	—	5200	1785	1785	3390	—	
		SN2050	—	5200	2110	2110	3880	—	
BF117		SK1700	—	11700	1785	1785	6920	—	
		SN2050	—	11700	2110	2110	8180	—	
Carro di base Base carriage Chassis de base Cruceta de base		4,5x4,5	1	6670	670	780	2040	2040	
		5x5	1	7550	670	780	2300	2300	
		6x6	1	8870	670	780	2500	2500	
		4,5x4,5	2	3180	420	780	980	1960	
		5x5	2	3530	420	780	1060	2120	
		6x6	2	4320	420	780	1200	2400	
Puntoni di base Rafter Jambes de force Cabrios de base		4,5x4,5	4	4070	240	300	270	1080	
		5x5	4	4250	240	300	280	1120	
		6x6	4	4560	420	300	420	1680	
Elemento a perdere Disposable frame Chassis a perdre Bastidor desechable		SK1700	1	1840	1910	1910	1430	—	
		SN2050	1	2600	2260	2260	2030	—	
Elemento recuperabile Recoverable frame Chassis récupérable Bastidor recuperable		SK1700	1	1300	2170	2170	1720	—	
		SN2050	1	1300	2620	2620	1860	—	
Bogie di traslazione Driven bogie Boggie motorisèe Balancin de traslaciòn		4	1160	700	600	700	2800		
Blocco zavorra di base Base ballast block Lest de base Bloque de lastre		4,5x4,5	2	5000	750	600	5175	10350	
		5x5	2	5300	1000	600	7300	14600	
		6x6	2	6400	1200	600	10600	21200	
		4,5x4,5	—	3600	1450	300	2800	—	
		5x5	—	4100	1600	300	3500	—	
		6x6	—	4800	2000	300	5070	—	
Corsoio di montaggio Climbing cage Cage de montage Jaula de montaje		SK1700	1	8300	2600	2500	6000	—	
		SN2050	1	8300	2900	2700	6700	—	

Gru in cavedio | Télescopage sur dalles | Climbing crane | Kletterkrane im Gebäude



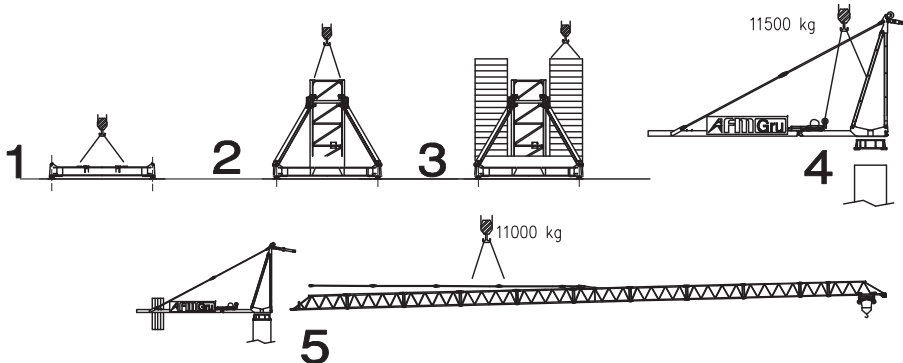
SN2050	H (m)	A (m)	R (t)	P (t)
	9	45.3		
	10	42		
	11	39.3		
	12	37		
	13	35		
	14	33.4		
	15	32		
	16	30.7		
	17	29.6		
	18	28.6		
	19	27.8		
20	27			
<p>Apertura passaggio gru Opening for crane passing</p>		50.8		

Sopralzo idraulico | Telescopic | External climbing | Kletterkrane


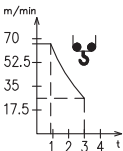
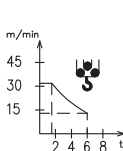
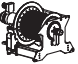


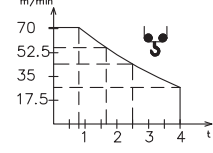


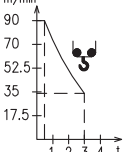
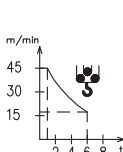



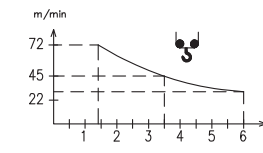
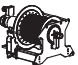





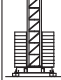


	SK1700	SN2050
C	27.3 m	31.2 m
B	15.6 m	19.5 m
A	39.5 m	50 m
T	23.4 m	27.5 m
MT	26 txm	26 txm

Montaggio | Montage | Erection | Montage | Montaje | Montagem



Meccanismi | Mechanisms | Mécanismes | Antriebe | Mecanismos

Sollevamento V25.60 Hoisting Levage Heben Elevaci3n Eleva7ao									 V25.60 18.4 kW 37 kVA 270 m 500 m (L)			
	m/min	7	18	28	42	56				65		
	t	3	3	3	2.25	1.5	0.9					
							m/min	3.5		9	14	21
	t	6	6	6	4.5	3	1.8					
Sollevamento V33.60 Hoisting Levage Heben Elevaci3n Eleva7ao								 V33.60 24 kW 40 kVA 260 m				
	m/min	2.5	15	27	43	56			71			
	t	4	4	4	2.5	1.7	0.8					
Sollevamento V33.90 Hoisting Levage Heben Elevaci3n Eleva7ao									 V33.90 22 kW 47 kVA 380 m			
	m/min	3	18	34	54	70				90		
	t	3	3	3	1.8	1.3	0.5					
							m/min	1.5		9	17	27
	t	6	6	6	3.6	2.6	1					
Sollevamento V45.60 Hoisting Levage Heben Elevaci3n Eleva7ao								 V45.60 33 kW 57 kVA 270 m 500 m (L)				
	m/min	3	14	30	45	60			72			
	t	6	6	6	3.5	2.4			1.4			
Carrello Trolleying Distribution Katzfahren Distribuci3n Distribui7ao						0 → 85	m/min	3.6 kW				
	Rotazione Slewing Orientation Schwenken Orientaci3n Rota7ao						0 → 0,9	giri/min tr/min rp/min	4.4 kW @ 1200rpm n° 2 x 2.2 kW			
Traslazione Travelling Translation Kranfahren Traslaci3n Traslao7ao							0 → 20	m/min	7.5 kW			

Rete elettrica | Réseau | Mains supply | Netzstrom | Red | Rede electrica

400 V - 50 Hz